



INVEST
Morris
Community Profile

2023



M Richard
& Associates Ltd.

200 – 55 Donald St
Winnipeg, MB R3C 1L8
Ph: 204-202-7672 | info@mrichard.ca
www.mrichardassociates.ca

THE STORY OF MORRIS

Officially incorporated in 1883, the Town of Morris is the fifth oldest urban municipality in Manitoba next to only Winnipeg, Portage la Prairie, Brandon, and Selkirk. The Town was originally known as Scratching River, situated at the centre of the Red River Valley between the City of Winnipeg and the Emerson-Pembina International Border, the other two major urban areas along the Red River, historically a popular trading route.

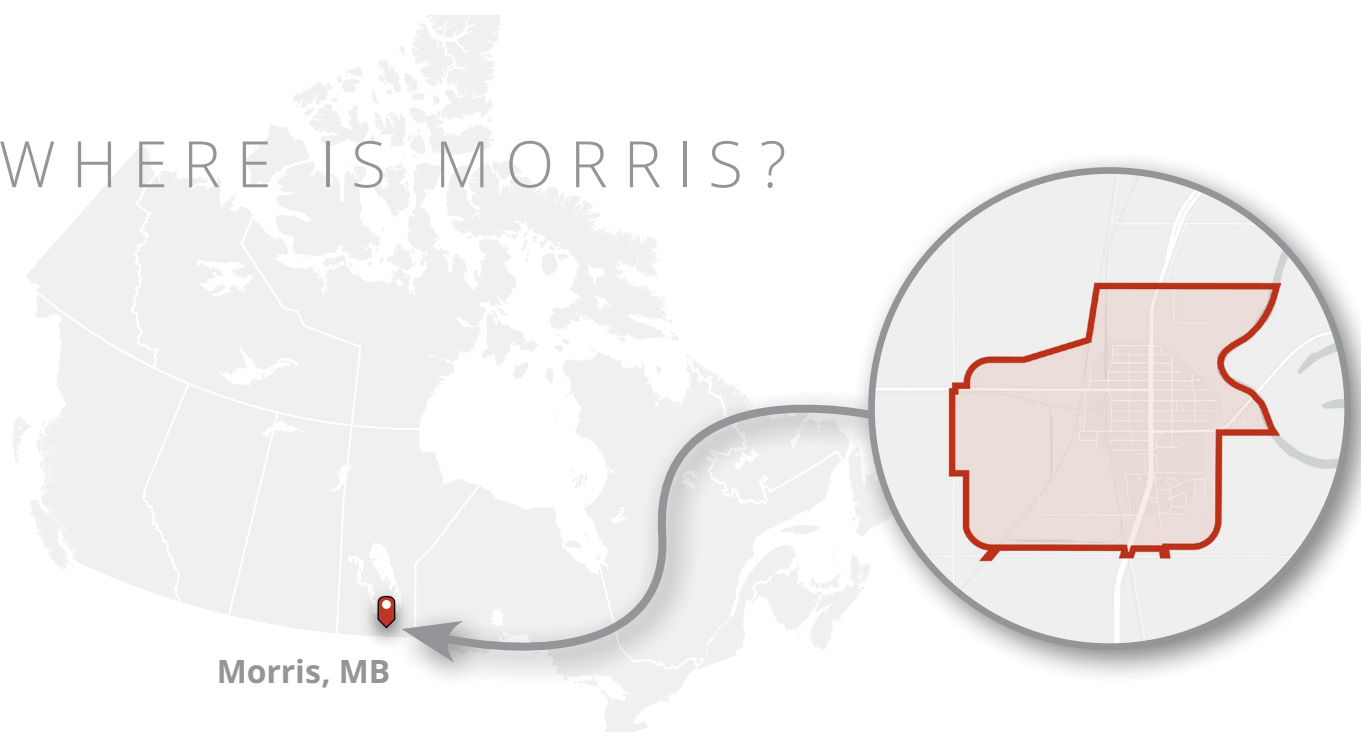
The Red and Morris Rivers have long been used to drive the Town's economy, forming a hub for fur-trade activities during the early 1800s. Being drained by these two rivers, the surrounding area has benefited from suitable soils to support agriculture and spin off industries. Having experienced many severe flooding events over the course of its history, Morris has developed a culture of resiliency and local innovation to adapt to its challenges.



CONTENTS

1.0 INTRODUCTION	1	5.0 AMENITIES	15
2.0 CITIZENS.....	2	Sport & Recreation	15
Population	2	Parks & Campgrounds.....	17
Growth	2	Arts & Culture	18
Age Profile.....	2	6.0 DEVELOPMENT AREAS.....	20
Language Profile.....	2	Land Availability.....	20
Housing Types.....	3	Infrastructure.....	23
Household Income	4	7.0 COMMERCE.....	26
3.0 KEY SECTORS	5	Real Estate	26
Logistics Hub & Manufacturing.....	5	Cost of Housing.....	26
Tourism & Hospitality	6	Education	27
Health, Wellness & Active Living	7	Logistics	27
Food and Beverage	8	Labour Force	28
Residential Development	9	Market Trends	29
E-Commerce & Technology.....	10	8.0 CONNECT WITH US	30
4.0 ACCESS TO MARKETS	11	9.0 SERVICE LIST	31
Roads.....	13		
Rail	13		
Air	13		
Commute	14		

WHERE IS MORRIS?



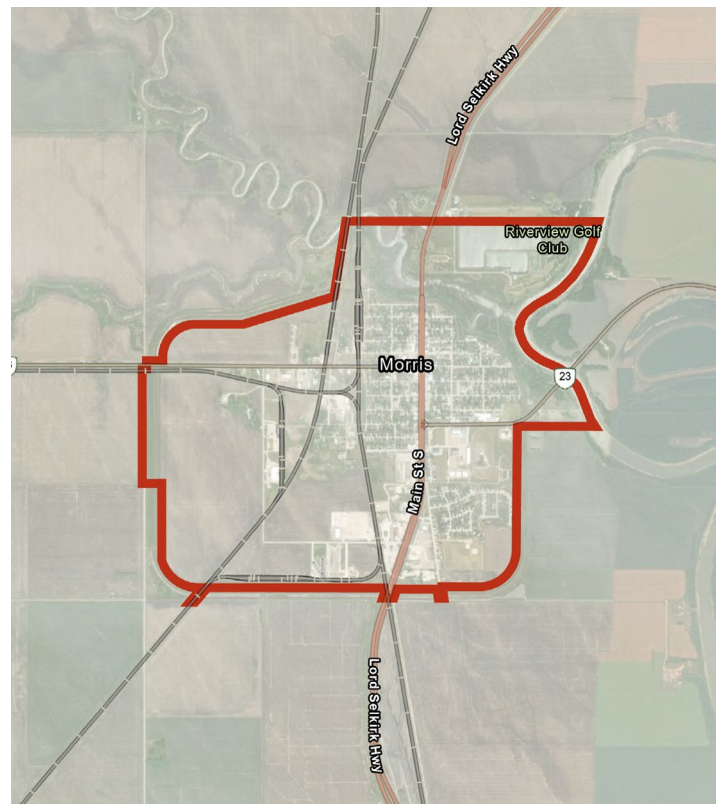
1.0 INTRODUCTION



The Town of Morris is an established urban centre located 47 kilometres (35 minutes) south of the Perimeter Highway in Winnipeg via Highway 75. We are located on the traditional territory of the Anishinaabeg, Cree, Oji-Cree, Dakota and Dene Peoples, and the homeland of the Red River Metis.

Morris is well known for its annual Stampede Festival, drawing hundreds of Manitobans and out-of-towners. There is something about our picturesque prairie landscapes, and unique location to the Red and Morris River junction.

The Town is mostly surrounded by the Rural Municipality of Morris, which neighbours the RM of MacDonald and Ritchot to the north, De Salaberry to the east, Montcalm and Rhineland to the south, and Dufferin and Roland to the west.



Map 1 Town of Morris

2.0 CITIZENS

POPULATION

The census population of Morris was 1885 in 2016 and 1975 in 2021, which represents a change in population of nearly five percent (4.5%). Since dipping by negative four percent (-4%) in 2006, the Town has been growing steadily, with a spike of nine percent (9%) growth between the 2011 and 2016 Census.

GROWTH

The Town of Morris has a stable and resilient population that can be attributed to the strong trade, logistics and spin-off agricultural based industries that support it.

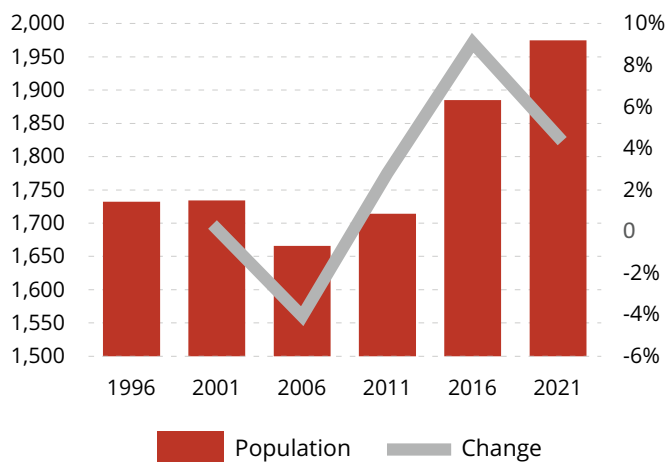
AGE PROFILE

Like many communities across Manitoba and Canada, Morris is a young, yet aging community. What does this mean? This means there is a higher proportion of mid-to-old age adults (55+) and youth (< 24).

LANGUAGE PROFILE

English is the most commonly spoken language in Morris with 87% of respondents speaking primarily English at home.

Figure 1 Growth Trend



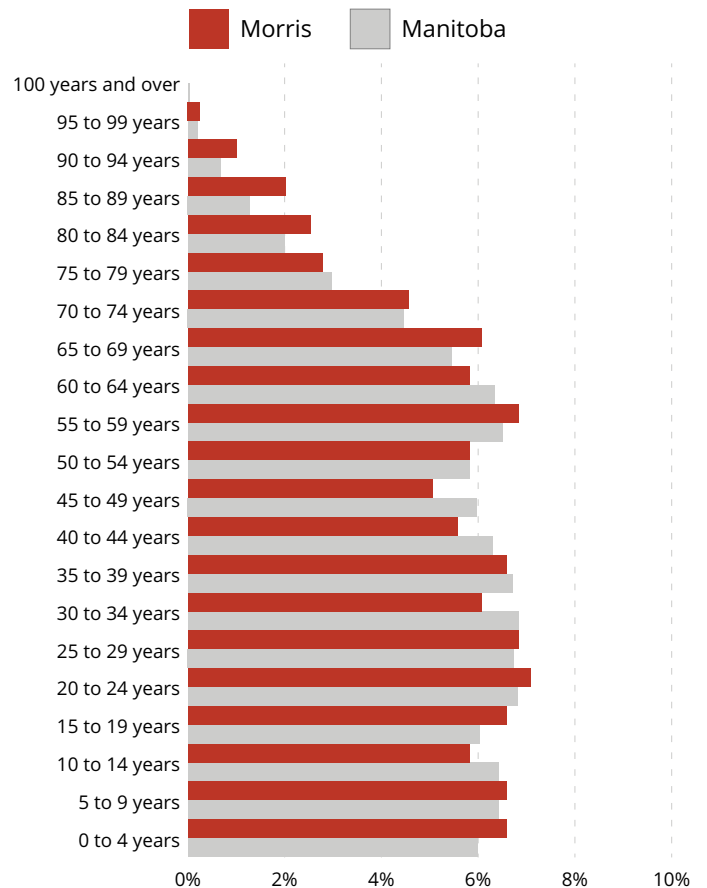
30%

of people aged 50-74

Table 1. Morris Population

1996	2001	2006	2011	2016	2021
1,732	1,734	1,666	1,714	1,885	1,975

Figure 2 Age Profile



HOUSING TYPES

The dominant housing style in Morris is the single-detached home, which is comparable to many other smaller urban or rural areas in Manitoba. The second most common are row houses, followed closely by low-rise buildings as the third most common housing type. The remainder is made up of semi-detached, rowhouse, mobile dwellings, and other dwellings.



Figure 3 Housing Typology

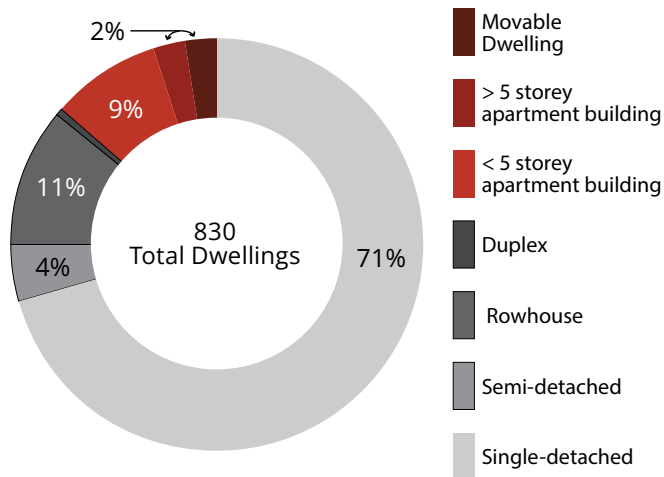
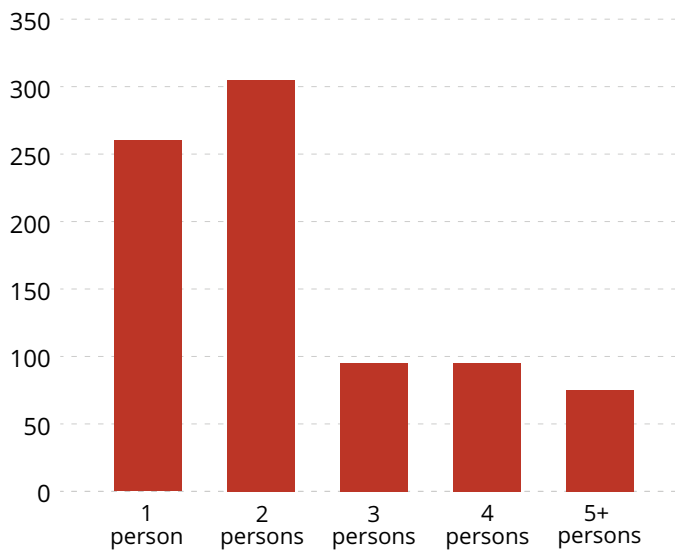


Figure 4 Household Size



Statistics Canada 2021



Average Household Size

2.3

Median Individual Income

Town of Morris \$34,000

Manitoba - \$39,600

Canada - \$36,800

Median Household Income

Town of Morris \$62,400

Manitoba - \$69,000

Canada - \$66,800

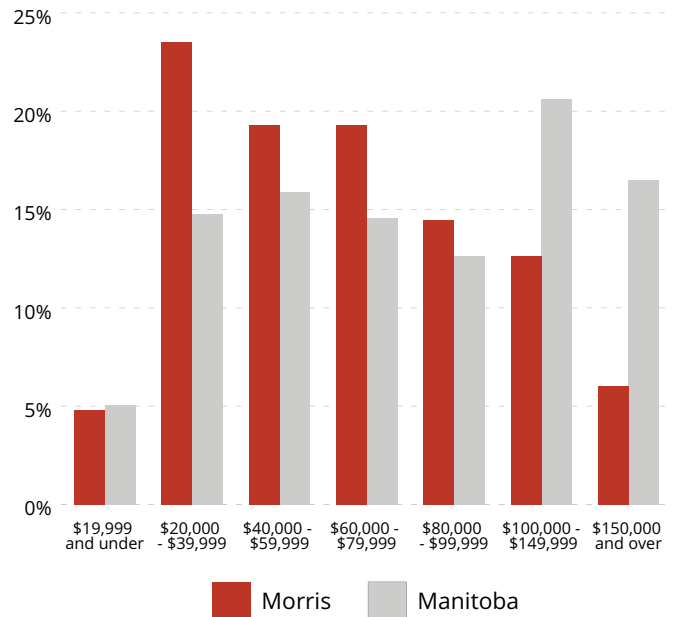
After Tax - Statistics Canada 2020

Economic families and persons not in an economic family

HOUSEHOLD INCOME

While the median household income in Morris is below the Manitoba and Canadian median, nearly half of all households earn \$80,000 or greater. There is also a greater proportion of households earning between \$60,000 and \$99,999 annually compared to Manitoba.

Figure 5 Household Income



Statistics Canada 2021



3.0 KEY SECTORS

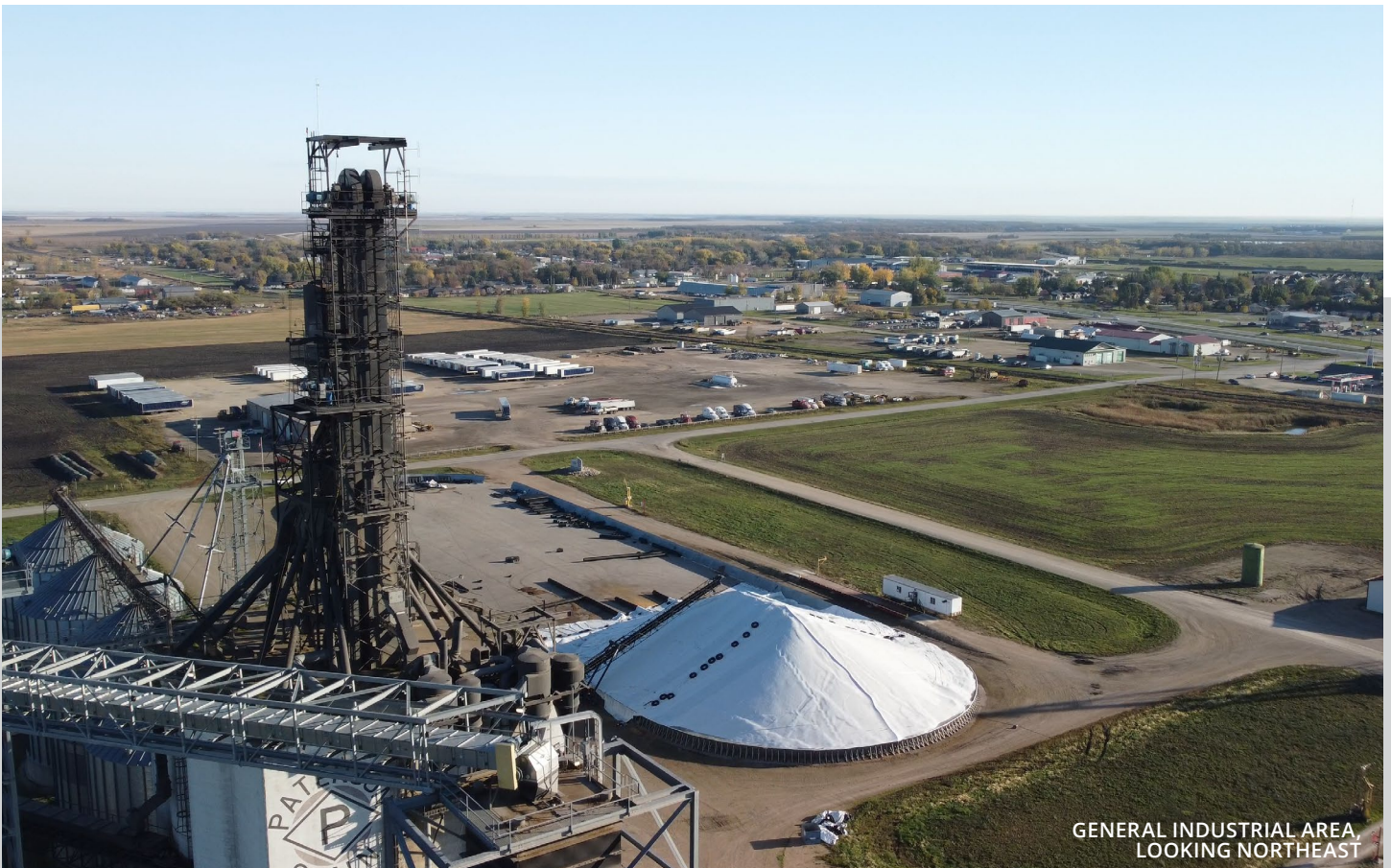
LOGISTICS HUB & MANUFACTURING

Given the Town’s location to CentrePort Canada, North America’s largest trimodal inland port, and the Mid Continent Trade Corridor, Morris is in a unique position to capture investment from a growing commercial-industrial real estate market.

Manitoba is a leading transportation distribution centre in North America with access to many national and international trucking companies. The Highway 75 Corridor is a critical link that is responsible for transporting nearly 80 billion dollars of goods each year. Morris is poised to take advantage of this activity, being located at the centre of Highway 75 and is capable of meeting the needs of the 21st century tri-national supply chain.

For additional resources and information, please see the following links:

- [Logistics Hub & Manufacturing Profile](#)
- [Site Selector](#)



3.0 KEY SECTORS

TOURISM & HOSPITALITY

Taking place annually in Morris is Manitoba's only professional Stampede event. It features a weekend full of rodeos, live music, food, drinks and entertainment. The festival brings together people from across Manitoba and Saskatchewan for a series of family events, cultural demonstrations and exhibits.

Water adventures on the river are also popular among locals. We have access to hundreds of kilometers of river trails for the outdoor enthusiast.

For additional resources and information, please see the following link:

- [Tourism and Hospitality Profile](#)



MANITOBA STAMPEDE,
2023 RODEO

3.0 KEY SECTORS

HEALTH, WELLNESS & ACTIVE LIVING

The Town of Morris is a regional centre for health and wellness, providing a full range of services including a 23-bed, 24-hour hospital with emergency services, therapeutic recreation, diagnostics, minor surgeries, home care, mental health, physiotherapy, palliative and personal care.

Health here in Morris is an important sector both in the form of medical services through Southern Health-Sante Sud Region, but also active living and health promotion. Morris takes pride in offering a healthy community to its residents.

The strength of the health and wellness sector is evident with out various public, private and not-for-profit programming. With diverse opportunities to stay healthy and active, Morris is positioned meet the needs of an aging baby boomer, as well as a growing newcomer population.

For additional resources and information, please see the following links:

- [Health, Wellness & Active Living Profile](#)



MORRIS WELLNESS CENTRE

3.0 KEY SECTORS

FOOD AND BEVERAGE

Morris is a common destination to stop for fuel, a meal or for groceries for travellers and commercial truckers. Surrounding rural communities know Morris as a hub for retail and as a marketplace to sell their local goods. The region's fertile soil has allowed agricultural producers to grow high quality crops to be sold at local retailers in Morris.

Agriculture continues to be one of Manitoba's leading export sectors and over the last number of years has seen significant growth in food processing, specifically pea and plant-based processing. From an export and distribution perspective, Morris has the potential to become

a popular satellite location for many distribution companies. From a retail perspective, Morris has the population mass to have products go from farm-to-table, reducing greenhouse gas emissions and energy inputs in the food sector.

For additional resources and information, please see the following link:

- [Food & Beverage Profile](#)



MORRIS BIGWAY FOODS

3.0 KEY SECTORS

RESIDENTIAL DEVELOPMENT

Morris is within a reasonable driving distance to Winnipeg, Steinbach and the Morden-Winkler region, making the Town attractive for residential development. We offer serviced, affordable land and a warm, small town feel with the amenities and services of a major urban centre. There is a consistent trend of urban migration outside of the Winnipeg region that has positioned Morris as a top tier candidate for residential growth.

Like many communities across Manitoba, the population of Morris is young, yet aging. There is a significantly higher proportion of youth under the age of 20 and older adults over the age of

65 compared to Manitoba as a whole. As the Town continues to establish itself as a health and wellness hub for the region, there are growing opportunities to provide transitional housing, among other alternatives, to meet the needs of both young families and older generations.

For additional resources and information, please review the following links:

- [Residential Development Profile](#)
- [Site Selector](#)



NEW RESIDENTIAL SUBDIVISION,
WILLOW DRIVE

3.0 KEY SECTORS

E-COMMERCE & TECHNOLOGY

The post-COVID economy will be increasingly digital, reducing geographical location constraints. Critical to supporting this sector is affordable internet and energy rates, both of which are available in Morris through Manitoba Hydro and Valley Fiber.

Morris also has adequate capacities in digital (i.e. internet bandwidth), energy (hydroelectric), water, wastewater, and road infrastructure to meet the demands generated by large scale commercial-industrial uses.

There are several opportunities along Main Street/Provincial Trunk Highway 75 (PTH75) to accommodate both large and small-scale uses to support a range of business opportunities.

For additional resources and information, please see the following links:

- [E-Commerce & Technology Profile](#)
- [Site Selector](#)



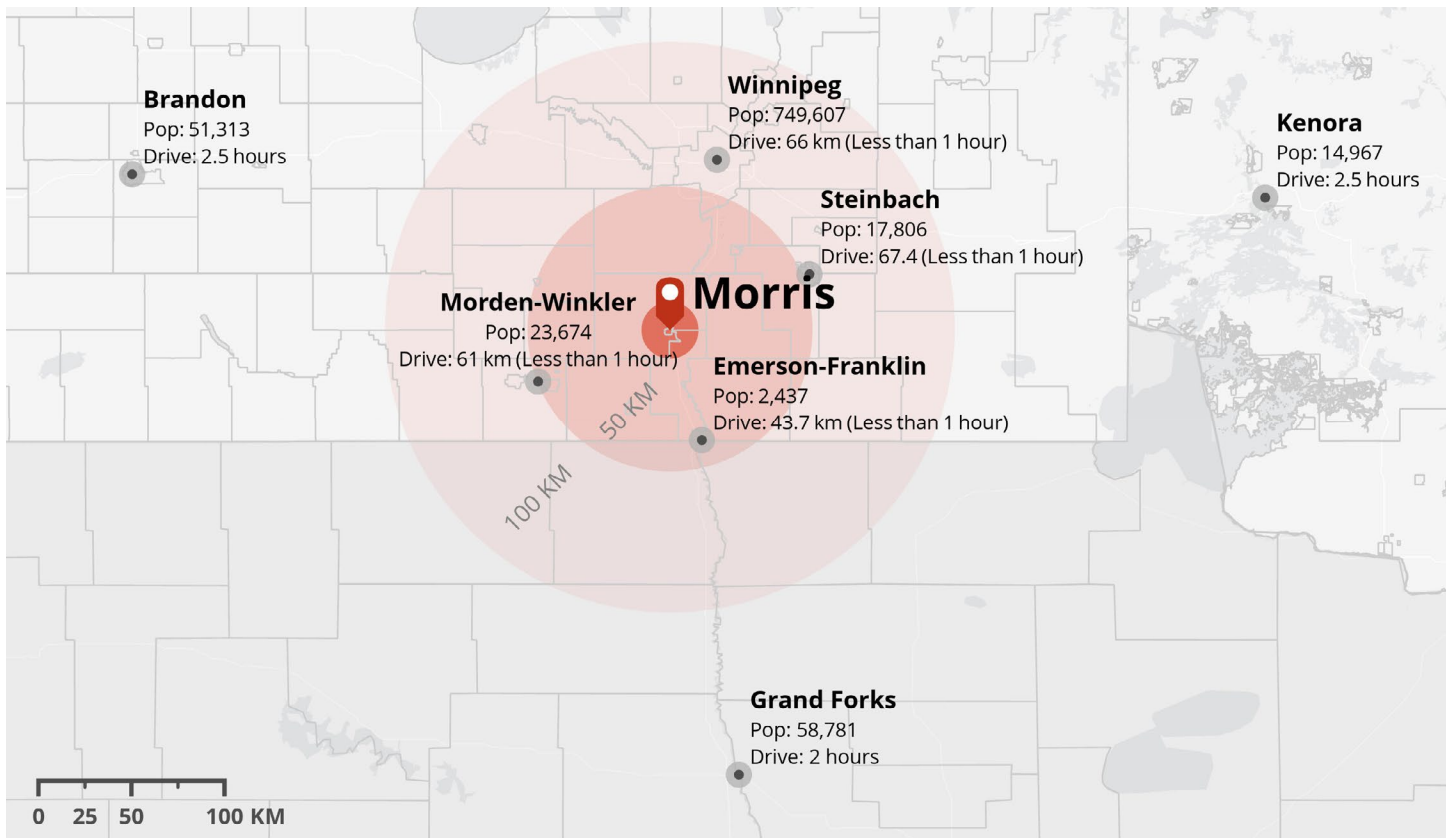
4.0 ACCESS TO MARKETS



Map 2 Mid Continent Trade Corridor

Morris plays a critical role in the tri-national supply chain by facilitating trade along the Mid-Continent Trade Corridor, one of the fastest growing north/south trade routes between Canada, the U.S. and Mexico. This trade route links together hundreds of markets comprised of over 100 million people stretching from Manitoba to Mexico. Here, we are the direct link between the Mid Canada Gateway

at the Emerson-Pembina Port of Entry, one of the busiest and most significant land-based Port of Entries in Western Canada; and CentrePort in Winnipeg, the largest tri-modal inland port and foreign trade zone in North America. With over 2 million people living in urban centres within an 8-hour drive, Morris is an attractive gateway to markets in the Canadian and American midwest.



Located in southcentral Manitoba, Morris is positioned within reasonable driving distance to several urban centres which comprise a market of over 2.5 million people. Provincial Trunk Highway 75 and 23 links Morris to the surrounding region and fuels the Town’s rich consumer market. We are a hub for agri-business, logistics and transportation, healthcare, recreation and government services that serve a growing southcentral region.

With close proximity to southern Manitoba communities, Morris strikes a balance between urban standard amenities and services while offering the tranquility of country living and endless prairie views. In any direction, it is only a short drive to a major urban centre such as Winnipeg, Brandon, Grand Forks or Steinbach.

Table 2. Surrounding Communities		
Community	Drive	Pop. (2021)
Emerson-Franklin, MB	< 1 hour	2,437
Morden-Winkler, MB	< 1 hour	23,674
Winnipeg, MB	< 1 hour	749,607
Steinbach, MB	< 1 hour	17,806
Grand Forks, ND	2 hours	58,781
Brandon, MB	2.5 hours	51,313
Kenora, ON	2.5 hours	14,967
Fargo, ND	3 hours	126,748
Minneapolis, MN	6 hours	425,336
St. Paul, MN	6.5 hours	307,193
Regina, SK	6 hours	226,404
Thunder Bay, ON	8 hours	123,258
Saskatoon, SK	8.5 hours	282,900
		2,410,424



ROADS

The Town of Morris is located at the junction of Provincial Trunk Highway (PTH) 75, a four-lane provincial expressway that provides a direct link to Winnipeg and the United States; and PTH 23, a two-lane secondary arterial that connects Morris with communities in southwestern Manitoba. Both PTH 75 and 23 are designated Road Transportation Association of Canada (RTAC) Routes and can handle vehicle loads of up to 63,500 and 62,500 kilograms respectively. As the only community in Manitoba whose Main Street is PTH 75, annual public traffic flow far exceeds two million vehicles with forecasts suggesting continued growth, particularly for commercial vehicles.

RAIL

Morris is served by three major rail lines: The Canadian National (CN), Canadian Pacific (CP) and Burlington Northern (BN) Railway. The CN and CP tracks extend from Morris, MB north to Winnipeg, serving major agricultural, chemical, mechanical, and technological manufacturers. The Winnipeg

Intermodal Terminal for both CN and CP offer transportation and supply chain services with access to eight (8) major ports that connect you with key markets.

AIR

While there are no airports or airstrips within town, there are a number of smaller facilities in surrounding municipalities including the Rosenort Airstrip (17 km), Altona Airport (47 km), Winkler Airport (62 km) Steinbach Airport (70 km). The nearest international airport is the Winnipeg Richardson Airport (74 km), which processes over 4,000 cargo flights each year and more than 1,000 semi-trucks of cargo each month.

Richardson International Airport:

- Located 115 kilometres north of Morris
- Accommodating 525 weekly nonstop flights, including international carriers, commuter airlines, jet freight carriers, fixed base operators, and various charter operations
- Two runways, 11,000 and 8,700 feet long

COMMUTE

In the 2016 census, 42% of respondents said that their commute was less than fifteen minutes to work, while 38% people said that their commute was thirty minutes or more to work, and roughly 12% of respondents commute 60 minutes or more.

While these indicate that many people are working within their own communities or within the RM, there is a significant portion of people that travel outside municipal boundaries for work.

As a commuter hub for southern Manitoba, Morris has proactively been planning for the transition to electric vehicles by installing six tesla charging stations and two standard charging stations.

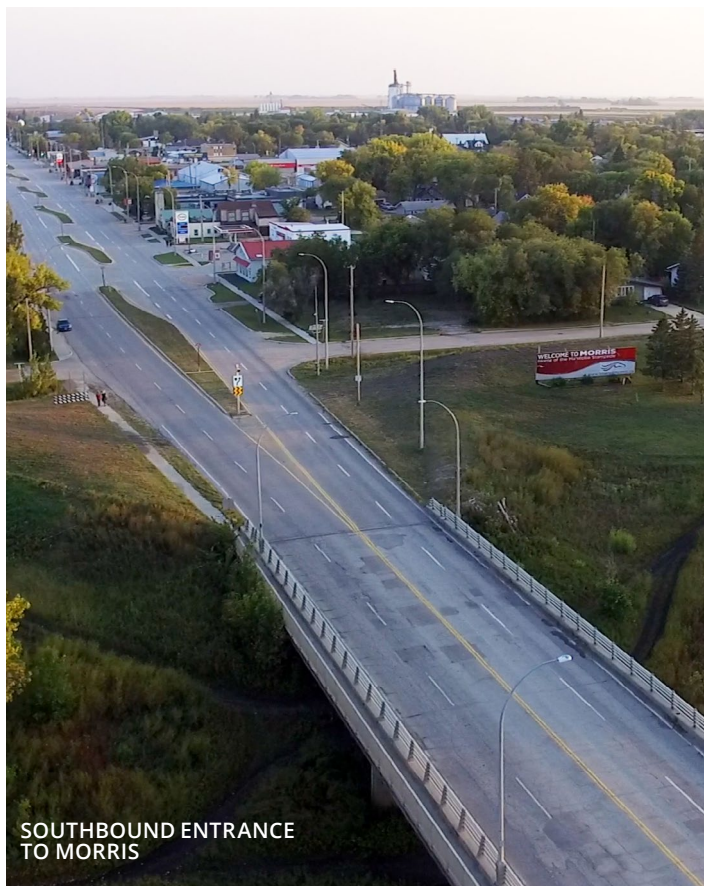


Figure 6 Mode of Commute

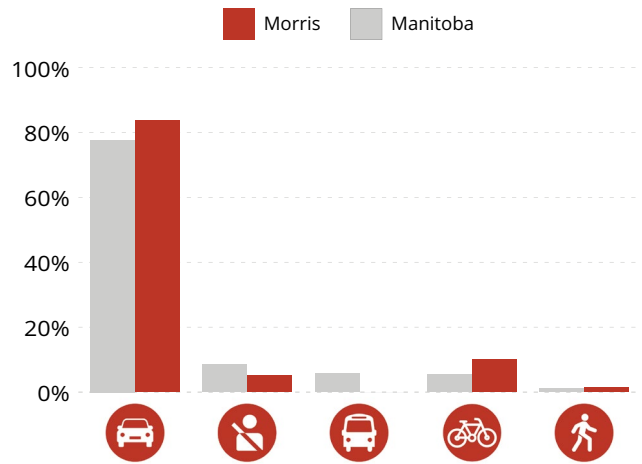


Figure 7 Commute Duration

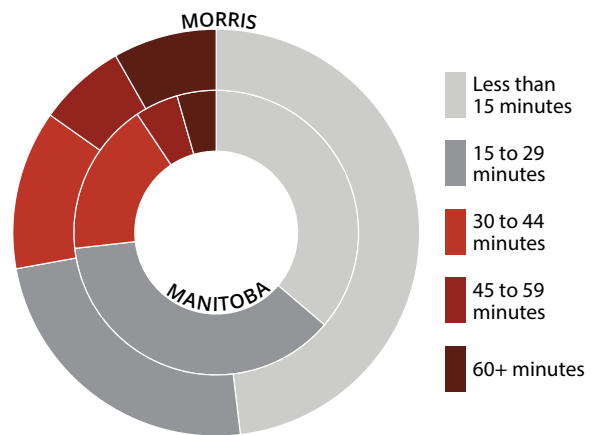
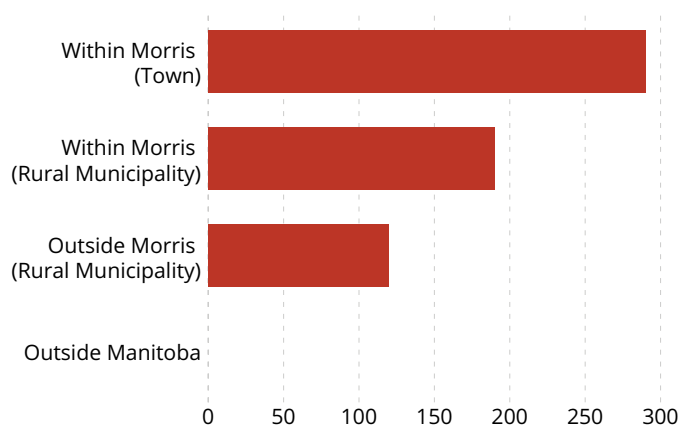


Figure 8 Commute Distance





5.0 AMENITIES

SPORT & RECREATION

Morris is an established centre for sport, recreation and active living for the southcentral region of Manitoba. Here, you will find several ways to stay fit and discover new opportunities to enhance your active lifestyle. Whether it be the Morris Multiplex, Riverview Golf Course, or one of our many outdoor sport and recreation fields and courts, we offer something for everyone.

Morris Multiplex

Built in 1988 and home of the Pembina Valley Twisters of the Manitoba Major Junior Hockey League and Morris Curling Club, the **Morris Multiplex** is a 75,000 square foot facility with the combined capacity to hold up to 1,500 people for major tournaments and social functions including hockey and ringette, conferences and tradeshow, wedding socials, banquets, concerts and art performances.

The [Cargill Curling Training Centre](#) is one of the few year-round curling facilities in Western Canada. It is equipped with cutting-edge technology found nowhere else on the globe, and has produced a number of world champions as a result.

Within the facility is the [Morris Wellness Centre](#) with 24/7 access to fitness equipment, a large Convention Centre, and a corral room on the second-level that offers a full-serviced lounge overlooking the arena and exhibition area. The Convention Centre space is equipped with a divisible wall and adjacent commercial-grade kitchen to serve all types of events and social functions.

Morris Community Pool

Constructed in 2011, our town of under 5,000 boasts a junior-sized Olympic outdoor pool that is heated and capable of hosting short-course competitions. It is situated amongst a quiet residential area across from the Manor, making it a popular place during the summer for families, residents and visitors. [Morris Community Pool](#) is suitable for both lessons and leisure swimming, featuring a diving board, slide and fully-accessible splash park, picnic area, public washroom and fenced in playground.

Riverview Golf Course

Located on the north edge of town along the Red River, the [Morris Riverview Golf and Country Club](#) is a 2,875 yard, par 35, nine hole golf course with challenging riverside greens, wooded fairways, and of course, a licensed club house overlooking the course.



PARKS & CAMPGROUNDS

Morris is surrounded by beautiful prairie countryside and a winding Red River that contributes to serene parks and campgrounds, including two serviced campgrounds and three popular parks within Town limits:

- Stampede Park Campground
- Scratching River Campground
- Willow Park

Stampede Park Campground

Perhaps the most well-known part of Morris is our Stampede Grounds adjacent to the Multiplex. It features a number of facilities to accommodate large entertainment performances, rodeo shows, and social functions including concessions and festivals.



MORRIS STAMPEDE
GROUNDS

Located off Highway 75 or Highway 23, there are both serviced and unserviced lots available for use with drinking water, coin-operated showers and picnic shelters available for use for Recreational Vehicles and trailers.

Scratching River Campground

Located right near the Red River just 4 kilometres off Highway 75 along Highway 23, this campground is perfect for those looking for quick accommodations or those looking to access the river. Sites are serviced with electricity, picnic shelters and fire pits.

Willow Park

Completed in 2022, Willow Park offers a space for soccer, baseball and youth recreation including a fully-accessible playground. The park is lined with trees that shade paved walkways and seating/picnic areas.



MORRIS BASEBALL
DIAMONDS, WILLOW PARK

ARTS & CULTURE

Here in Morris, it is easy to immerse yourself in our distinct small-town prairie culture where you'll find products, art and entertainment by local artists at many of our annual events and festivals such as Rockin' Horse, Rumble in the Valley, our Winter Festival, and of course, the Stampede and Exhibition.

Manitoba Stampede & Exhibition

Founded in 1964 and part of the Canadian Tour circuit, Morris is proud to host the Manitoba Stampede. Occurring each July, Morris Stampede

and Exhibition is a fast-paced, event-filled weekend that features top names in the professional rodeo circuit in bull riding, tie down roping, steer wrestling, chuckwagon racing and much more.

If attendees need to take a quick step back from the adrenaline rush of the Stampede, the Agricultural Fair includes a range of concessions and vendors whom also runs concurrently alongside the rodeo. The fair offers petting zoos, light and heavy horse shows, Youth Stars of Manitoba Talent Competition and other activities that are great for people of all ages.



STAMPEDE GROUNDS,
CONCESSION AREA

Craft Shows

Morris Recreation hosts a number of craft shows throughout the year including the largest Spring craft show in southern Manitoba. We are an established hub for regional artists, culinary specialists, and home businesses.

You will find our locally produced goods at most of our festivals including the Winter Festival, Spring Craft Show, Fall Craft Show and Christmas Craft Expo.

Festivals

Attend one of our annual festivals and immerse yourself in our small-town culture. The Stampede Grounds is host to Rumble in the Valley in June and the Teen Demolition Derby in September. Other popular festivals throughout the year include our Winter and Canada Day Festival, both of which feature live music, as well as indoor and seasonal outdoor activities.



Morris and District Centennial Museum

Having been officially founded in the mid-1800's after numerous years of fur trade in the area, Morris has an expansive history on display for visitors and its residents. Formerly a schoolhouse for the Carleton School District No. 36, this museum displays pioneer relics and glimpses into the pioneer lifestyle in the Red River Valley through murals. On the grounds of the museum, visitors can also check out monuments commemorated to Alexander Morris, and the original Morris Bell Tower.

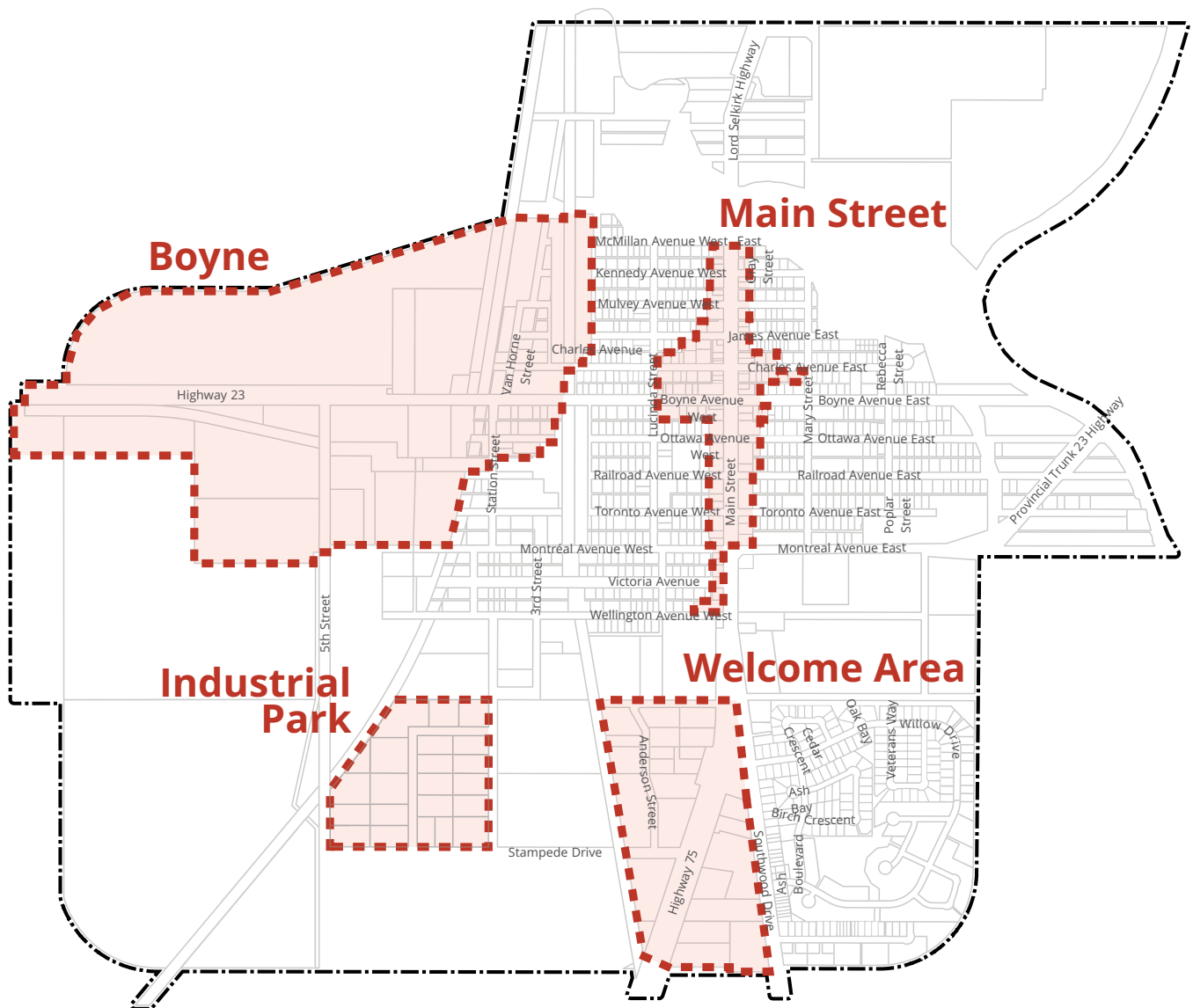
For the artistically inclined, the Art Club offers an annual membership to join in and express yourself in a friendly community environment while expressing your artistic visions. They additionally hold an Art Show in conjunction with the Annual Craft Sale at the Morris MultiPlex.

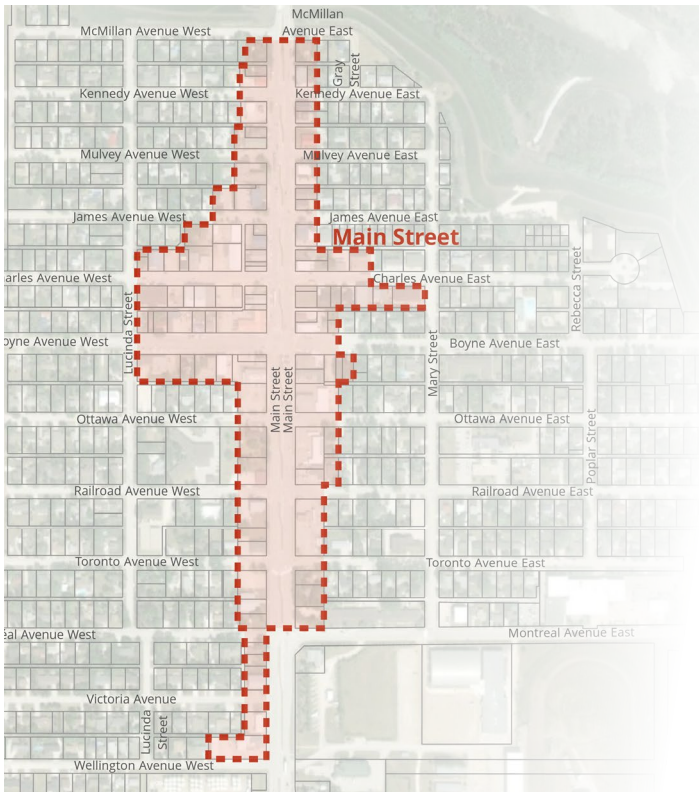


6.0 DEVELOPMENT AREAS

LAND AVAILABILITY

Morris has four primary development areas, each with their own set of advantages to fit your business needs. Our available inventory includes 'shovel-ready' industrial, commercial and residential lots in highly desirable locations. Here in Morris, there are advantages across all real estate classes.





Main Street

Intended Use: Residential Mixed Use

Available Services:

- Access to PTH 75 (RTAC 63,500)
- Connection to 200mm watermain and 150mm wastewater pipe
- Established recreation multiplex
- Available grocery and convenience, food and beverage, bank and dental services

Advantages:

- Established small business storefronts
- Pedestrian amenities
- On-street parking with curb 'bump-out' extensions
- Diverse businesses, residences and government services



Welcome Area

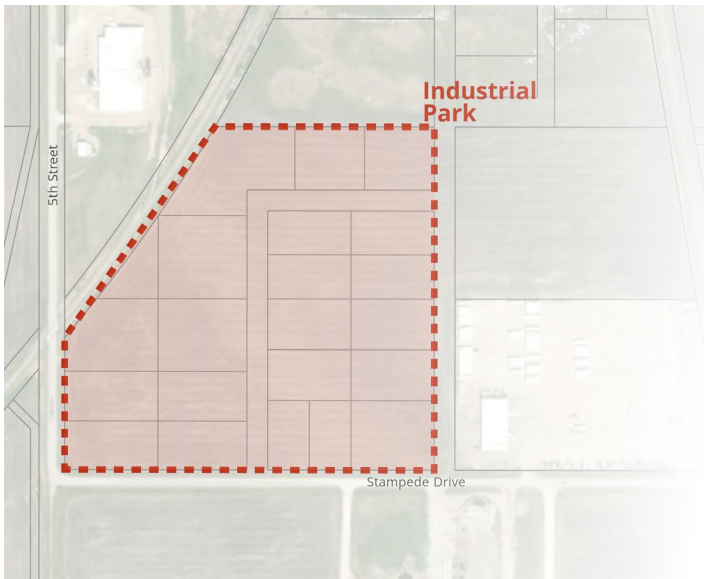
Intended Use: Retail & Accommodations

Available Services:

- Access to PTH 75 (RTAC 63,500)
- Connection to 200mm watermain and 150mm wastewater pipe
- Fuel and convenience retail businesses

Advantages:

- Town of Morris Welcome Signage (northbound)
- Established commuter / trucking service hub
- Large lots with frontage on PTH 75
- Opportunity for tourism and hospitality development



Industrial Park

Intended Use: Industrial

Available Services:

- Connection to 200mm watermain and 150mm wastewater pipe (Stampede Drive)
- Access to natural gas supply and hydro infrastructure with an available capacity in the range of 3-5 MVA
- Valley Fiber high speed internet technology

Advantages:

- Access to Mid Continent Trade Corridor and approximately 70+ million dollars of commercial vehicle traffic each day
- 'Shovel ready' industrial lots suitable for all types of industrial uses

Boyne Avenue

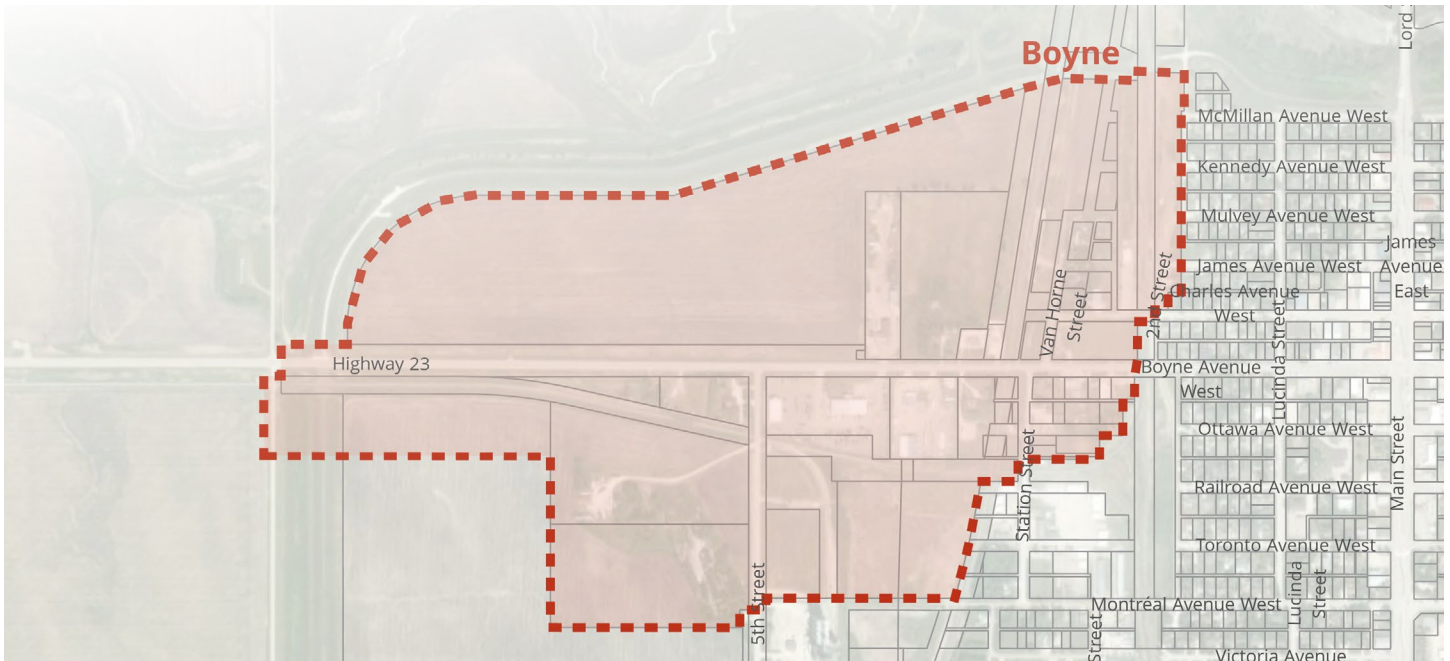
Intended Use: Employment Lands

Available Services:

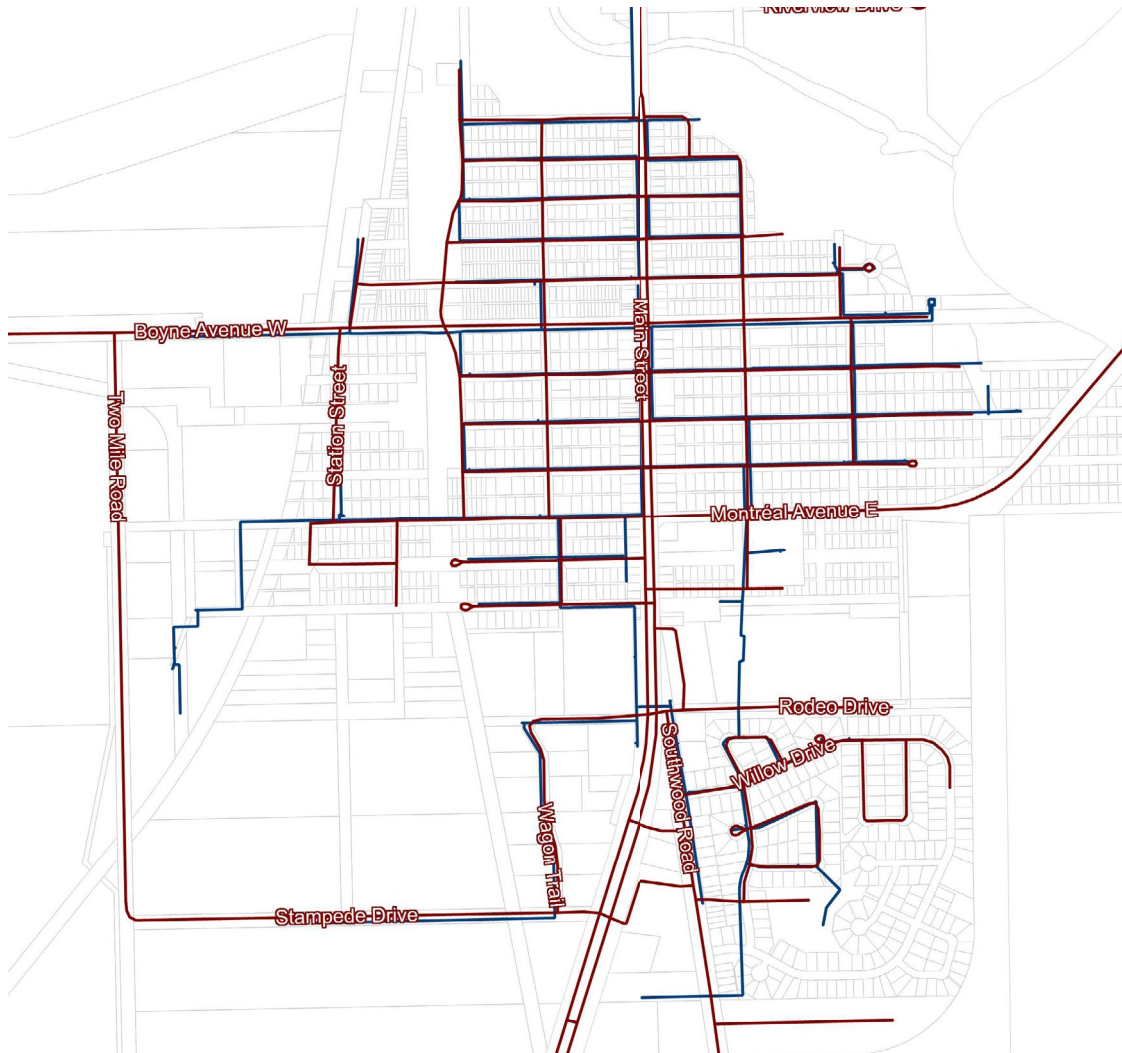
- Permanent flood protection berm to the north
- Rail and Highway 23 access (RTAC 62,500)

Advantages:

- Large tracts of land
- Can accommodate a range of land uses



INFRASTRUCTURE



Water Supply

Water is supplied by the Pembina Valley Water Cooperative (PVWC) Morris Water Treatment Plant with a capacity of 67 L/s of treated water for domestic use.

There is sufficient capacity provided by the existing pumps and water pipe network for peak day and peak hour usage including the full build-out of the industrial park. The existing reservoir is also currently sized adequately for domestic and emergency fire flow (137 L/s for 1.5 hours).

Water & Sewer Rates

First 15,000 gallons per quarter (water)
\$11.44 per 1,000 gal

Over 15,000 gallons per quarter (water)
\$9.80 per 1,000 gal

Over 15,000 gallons per quarter (sewer)
\$0.76 per 1,000 gal





Wastewater Treatment

The sewage lagoon currently has an estimated available organic loading capacity of 188.7 kg BOD5 /day and a hydraulic capacity of 792m³/day.

The current hydraulic load from existing town development is 581 m³/ day, with an additional 156 m³/day (1.8 L/s) upon full build-out of the Willow Drive subdivision in the southeast corner of the Town for a total hydraulic load of 737 m³/day.

Solid Waste

The Town of Morris offers weekly solid waste collection, bi-weekly recycling collection, and monthly compost collection services. Public Works offers a 24/7 recycling depot. The Town makes use of landfills located in Rosenort and Lowe Farm.

Hydroelectricity

Electricity is provided to the Town of Morris by [Manitoba Hydro](#). Rates as of January 2022 are presented in tables 3,4 and 5.

Natural Gas

Manitoba Hydro also provides natural gas to the Town of Morris. The natural gas capacity varies throughout the region and the following values are estimates that are subject to change at any time.

Within the Town of Morris, there is a capacity of 11 to 25 MCFH, which is able to support large apartment complexes, large shopping centres, grain dryers, or small to medium production facilities. Outside of the town to the west along PR 23, there is 1-10 MCFH capacity.

Table 3. Residential Natural Gas Rates

Charge	Cost
Basic Monthly Charge	\$14.00
Gas Commodity	18.78¢/m ³
Delivery	12.13¢/m ³

Table 6. Commercial Hydro Rates

Charge	Monthly	Monthly Charge (¢/kWh)			Monthly Demand (\$/kVA)	
		First 11,000 kWh	Next 8,500 kWh	Balance of kWh	First 50 kVA	Balance Demand
General Service Small	\$20.74	9.485	7.277	4.492	n/a	\$11.52
General Service Small (3 Phase)	\$33.69					
General Service Medium	\$33.69	9.485	7.277	4.492	n/a	\$11.52
General Service Large < 30 kV	n/a		4.219			\$9.75
General Service Large 30-100 kV	n/a		3.882			\$8.26
General Service Large > 100 kV	n/a		3.766			\$7.36

For larger energy needs, Contact [Manitoba Hydro](#)

Digital Technology

The Town of Morris is serviced by Valley Fiber, the fastest and most reliable fiber optic network in southern Manitoba. Valley Fiber uses an Active Ethernet build out/network design in order to provide dedicated 1 Gbps+ connections to each individual customer.

LTE and 4G cellular services are available in the community through numerous service providers, such as BellMTS, Rogers, Telus, Xplore Mobile, etc.

Table 4. Residential Standard Hydro Rates

Charge	Cost
Basic Monthly Charge (<200 Amp)	\$9.20
Basic Monthly Charge (>200 Amp)	\$18.40
Energy Charge	9.324c/kWh

Table 5. Residential Seasonal Rates

Charge	Cost
Basic Monthly Charge (<200 Amp)	\$106.32
Energy Charge	9.324c/kWh

7.0 COMMERCE

REAL ESTATE

On average, a little over approximately one-third of Morris households are residential rentals; about 215 units. Rental units provide affordable housing options to residents and the flexibility of choice that more people are currently seeking out. The most recent accurate housing data was calculated in the 2021 census.

COST OF HOUSING

According to the 2021 Census, housing prices in Morris are lower than the Manitoba median. In 2021, the average household cost in Morris was \$109,800 lower than the provincial average. The average monthly costs for housing are also lower than the provincial average.

Table 7. Ownership vs. Rental		
Dwelling Tenure	Town of Morris	MB
Owner-Occupied	73.9%	67.4%
Rental	26.1%	32.6%

Property Tax Rates

General Municipal - 21.95 Mills

Special Services - 3.70 Mills

Red River Valley School Division - 12.150 Mills



Table 8. Cost of Housing				
Location	Median Price	Average Price	Rental Average Monthly Costs	Ownership Average Monthly Costs
Manitoba	\$304,000	\$338,800	\$1,074	\$1,225
Town of Morris	\$220,000	\$229,000	\$900	\$1,000

Statistics Canada 2021

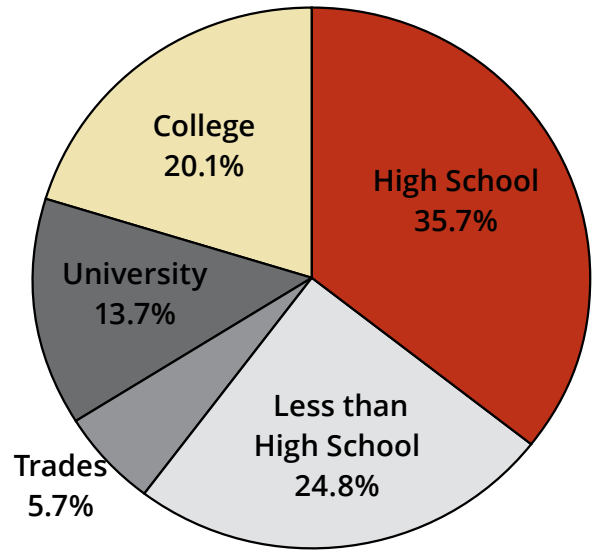
EDUCATION

The 2021 Census identified that over 75% of the population in Morris have completed their high school education and have moved on to attain either a trade, college or university education.

LOGISTICS

Given Morris' proximity to Winnipeg and the United States, the town is well positioned for logistical access for commercial freight. By rail, Western Canada has 3 class one railways converging in Winnipeg including the BNSF Railway that provides direct access through the Emerson-Pembina POE into the US. By land, there are a number of trucking and courier companies able to service the surrounding areas, as well as along a national network. The availability of transportation options presents opportunities for warehousing and staging of goods.

Figure 9 Education Attainment



Statistics Canada 2021

Table 9. Available Education

School	2018	2019	2020	2021
Morris School	432	446	401	434



MORRIS SCHOOL,
K-12

LABOUR FORCE

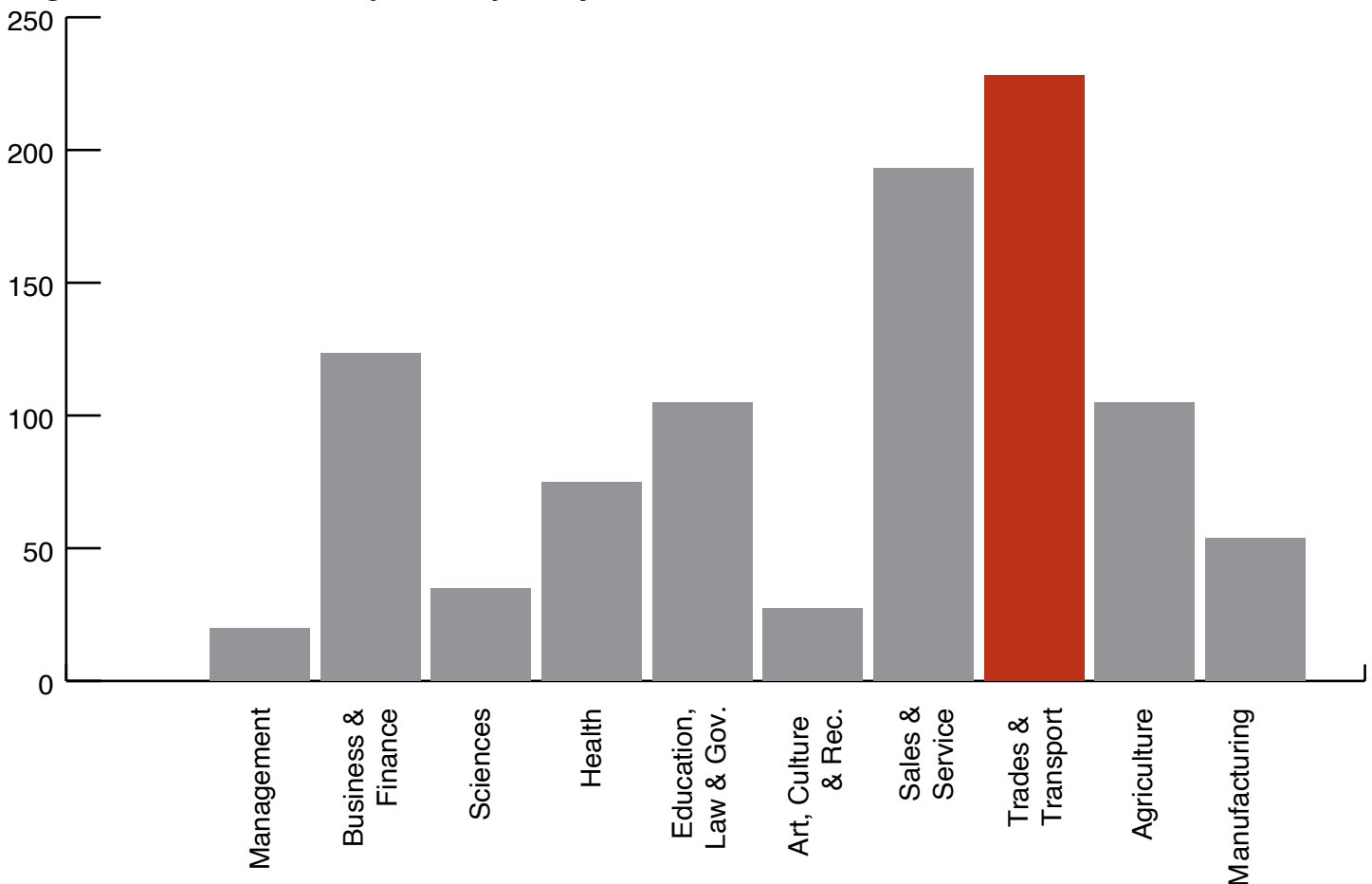
An estimated 950 people are currently in Morris' labour force. The largest sector of employment is the 'Trades, Transport and Equipment' sector, employing over 24% of the workforce. The second largest is 'Sales & Service' at 20%, followed by 'Business and Finance' at 13% and 'Education, Law and Government' at 12% of the total workforce.

Morris has an employment rate of 57.3%, 1.8% lower than the provincial average, according to the 2021 Census. However, the municipality has also been identified to hold a lower unemployment rate at 7.3% compared to the provincial unemployment rate of 8.3%.

Table 10. Average Hourly Wage by Labour (2021)

Industry	Wage (MB average)
Resources (Agriculture & Mining)	\$22.41
Management Occupations	\$44.29
Administration	\$26.13
Healthcare (Professional)	\$42.63
Nursing	\$40.97
Business & Finance	\$34.71
Applied Sciences	\$35.60
Education	\$38.99
Social & Community Services	\$20.22
Arts, Culture & Recreation	\$23.72
Manufacturing (labour)	\$20.29
Construction Trades	\$29.82

Figure 10 Workforce by Industry (# of jobs)



MARKET TRENDS

The Town of Morris is a hub for various industries and employers. Located along Highway 75 between the Emerson-Pembina POE and Winnipeg, Morris is strategically located to capitalize on opportunities in transportation and related industries.

Morris Industrial Park features serviced, ready-to-develop lots with direct access and links to PTH75 and CentrePort Canada. Morris is poised to build on Manitoba's momentum in manufacturing technology and agri-innovation.



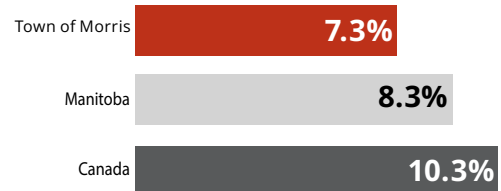
950

Annual Employment



57.3%

Employment Rate



7.3%

Unemployment Rate

Statistics Canada 2021

Table 11. Income Tax (2022)

Jurisdiction	Tax Brackets & %
Federal	15% on first \$50,197 20.5% on next \$50,195 26% on next \$55,233 29% on next \$66,083 33% of taxable income over \$221,708
Manitoba	10.8% on first \$34,431 12.75% on next \$74,416 17% on amount over \$74,416

Table 12. Business Highlights

Largest Industries	Growing Industries
Trades, Transport and Equipment	Digital Economy
Sales and Service Occupations	Tourism
Management	Construction
Business, Finance & Admin	Trade and Services

8.0 CONNECT WITH US

CONTACT US

The Town of Morris offers economic development programs, dedicated personnel, grants and incentives to support and facilitate projects. The Town is open for business and welcomes you.

Visit our website at www.investmorris.ca to learn more about the available resources:

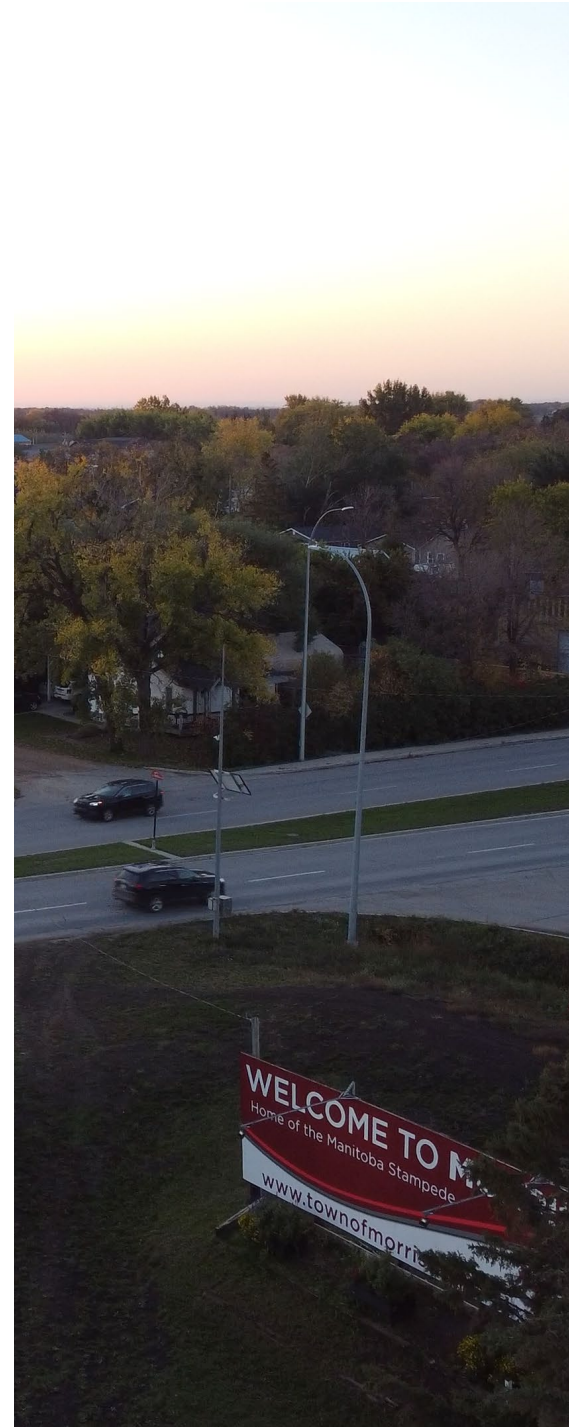
- [Invest Morris](#)
- [Data Library](#)
- [Site Selector](#)

Ready to start your next business investment or expansion? We are available and ready to assist investors and business.

Our experts are here to help. If you would like more information, please contact:

Town of Morris | Economic Development

1-380 Stampede Grounds
Morris, MB R0G1K0
p: 204-746-2531
info@townofmorris.ca



9.0 SERVICE LIST

GOVERNMENT SERVICES

- **Service Canada**
427 Rue Sabourin, St. Pierre Jolys, MB R0A 1V0
2 Provincial Truck Highway 12 Unit 1, Steinbach,
MB R5G 1T2
[Website](#) | P: 1-800-622-6232
- **Government of Manitoba - Infrastructure**
316 - 323 Main St, Steinbach, MB R5G 1Z2
[Website](#) | P: 204-346-6266
- **Town of Morris Office**
1-380 Stampede Grounds, Box 28
Morris, MB ROG 1K0
[Email](#) | [Website](#) | P: 204-746-2531
- **Manitoba Community Planning Office**
240 - 232 Main St, Steinbach, MB R5G 1Z2
[Email](#) | [Website](#) | P: 204-346-6240
- **Canadian Border Services Agency**
MB-75, Emerson, MB R0A 0L0
[Email](#) | [Website](#) | P: 1-800-461-9999
- **Morris Area Recreation Office**
1-380 Stampede Grounds, Box 28
Morris, MB ROG 1K0
[Email](#) | [Website](#) | P: 204-746-2531

BANKING SERVICES

- **BMO Bank of Montreal**
107 Main St, Morris, MB, ROG 1K0
[Website](#) | P: 204-746-2321
- **Access Credit Union**
100 Main St, Morris, MB, ROG 1K0
[Website](#) | P: 1-800-264-2926

EMERGENCY SERVICES

- **Morris Fire Hall**
139 Railroad Ave, Morris, MB ROG 1K0
P: 204-746-2211
- **Morris General Hospital**
215 Railroad Ave, Box 519, Morris, MB ROG 1K0
P: 204-427-2222
- **Royal Canadian Mounted Police**
239 Railroad Ave, Morris, MB ROG 1K0
P: 204-746-6214
- **Morris EMS Station**
246 Ottawa Ave, Morris, MB ROG 1K0
P: 204-746-6864

BUSINESS SERVICES

- **Morris & District Chamber of Commerce**
141 Main St, Morris, MB ROG 1K0
[Email](#) | [Website](#) | P: 204-712-6162
- **Community Futures Triple R**
Box 190, Morris, MB, MB ROG 1K0
[Email](#) | [Website](#) | P: 204-746-6180